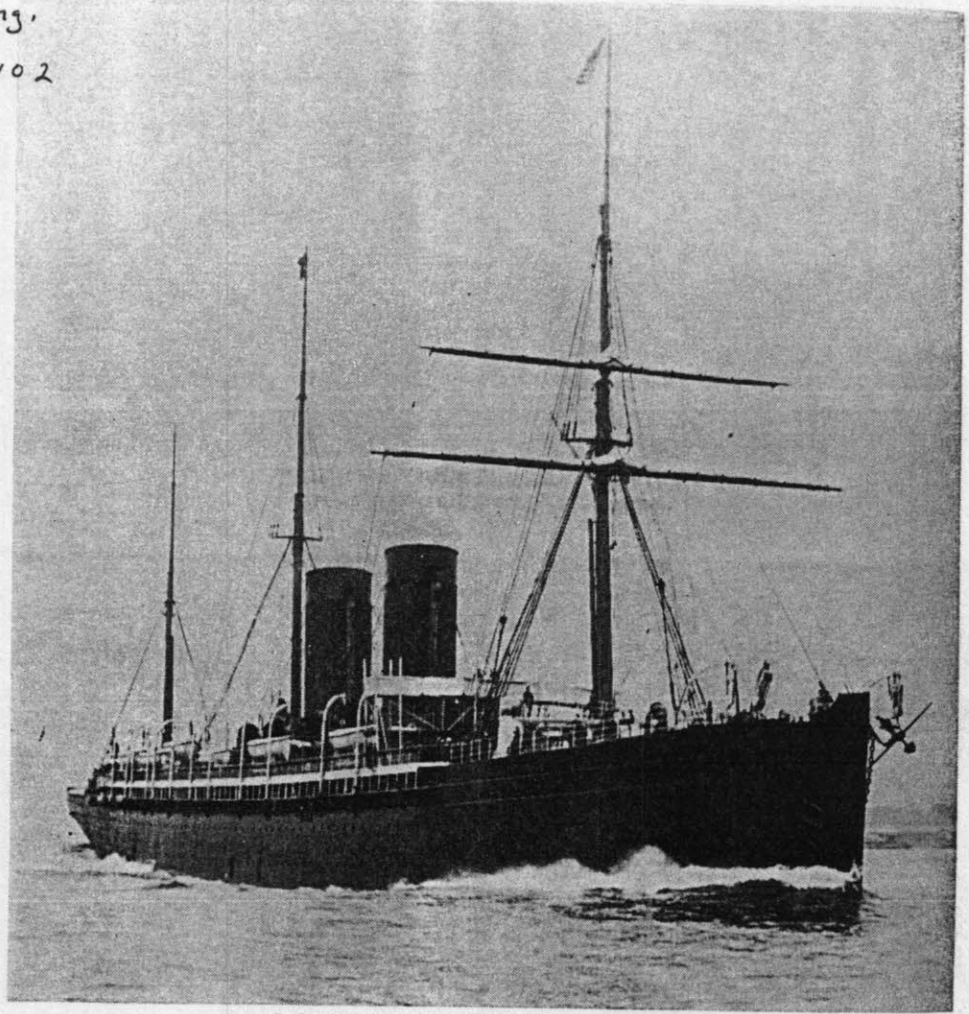
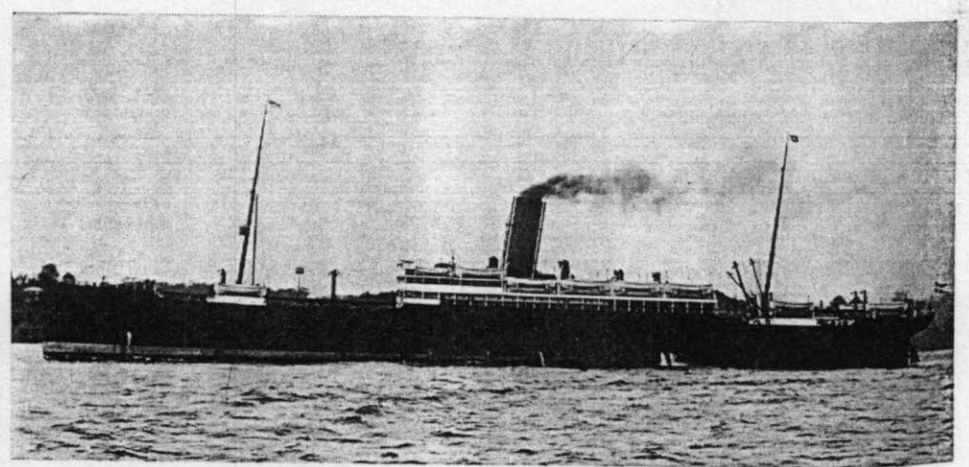


*Ships of our Ancestors } Iron World
Michael J. Anuta }*

*L. B. of Cong.
#83-91402*



S.S. UMBRIA, 1884 Cunard Line
Courtesy of Mystic Seaport Museum, Inc., Mystic, CT



S.S. UNITED STATES, 1903 Scandinavian American Line
Courtesy The Peabody Museum of Salem

Trans-Atlantic Passenger Ships

Red Star Line

Eugene W. Smith

Pub George H. Dean Co.

Iron world

Utopia (1898) Cunard Line.

Built by Swan, Hunter & Wigham Richardson, Ltd., Wall-seed-on-Tyne, England. Tonnage: 10,402. Dimensions: 500' x 57'. Twin-screw, 13½ knots. Four masts and one funnel. Torpedoed and sunk 190 miles from Fastnet on June 27, 1917, with loss of one life.

Umbria (1884) Cunard Line.

Built by Fairfield Shipbuilding and Engineering Co., Ltd., Glasgow. Tonnage: 8,127. Dimensions: 501' x 57'. Single-screw, 19½ knots. Three masts and two funnels. Scrapped in 1910. Sister ship: **Etruria**.

United Kingdom (1857) Anchor Line.

Built at Greenock, Scotland. Tonnage: 1,264. Dimensions: 243' x 32'. Single-screw. Note: She disappeared with 80 people on board on April 17, 1868, and was never heard of again.

United States (1903) Scandinavian-American Line.

Built by Alexander Stephen & Sons, Ltd., Linthouse, Glasgow. Tonnage: 9,993. Dimensions: 500' x 58'. Twin-screw, 16 knots. Two masts and one funnel. Scrapped in 1935. Sister ships: **Hellig Olav** and **Oscar II**.

Uranium (1891) Uranium Line.

Built by Wm. Denny & Bros., Ltd., Dumbarton, Scotland. Tonnage: 5,189. Dimensions: 420' x 48'. Single-screw, 14½ knots. Three masts and one funnel. Ex-Avooca, ex-Atlanta, ex-Avooca, ex-San Fernando, ex-Avooca. Made final voyage to New York in 1914.

Utopia (1874) Anchor Line.

Built by Robert Duncan & Co., Port Glasgow, Scotland. Tonnage: 2,731. Dimensions: 350' x 35'. Single-screw. Note: She was sunk by collision in Gibraltar Bay on March 17, 1891, with the loss of 563 lives.

Vaderland (1873) Red Star Line.

Built by Palmer's Shipbuilding and Iron Co., Ltd., Jarrow-on-Tyne, England. Tonnage: 2,748. Dimensions: 320' x 38'. Single-screw, 13½ knots. Three masts and one funnel. Note: She was the pioneer vessel of the Red Star Line. Commenced her maiden voyage from Antwerp to Philadelphia on January 19, 1873. Sister ships: **Nederland** and **Switzerland**.

* Denotes ship still in service under same name.

Vaderland (1900) Red Star Line. Built by John Brown & Co., Ltd., Clydebank, Glasgow. Tonnage: 11,899. Dimensions: 560' x 60'. Twin-screw, 15 knots. Four masts and two funnels. Renamed: **Southland**. Sister ships: **Finland**, **Kroonland** and **Zeeland**. Note: As the **Southland** she was torpedoed and sunk 140 miles from Tory Island on June 4, 1917, with the loss of 4 lives.

Vancouver (1883) Dominion Line.

Built by C. Connell & Co., Glasgow. Tonnage: 5,232. Dimensions: 430' x 43'. Single-screw, 14 knots. Four masts and two funnels. Renamed: **City of Chicago**.

Vasco Nunez de Balboa (1891) Spanish Line.

Built by Wm. Denny & Bros., Dumbarton, Scotland. Tonnage: 7,813. Dimensions: 531' x 51'. Twin-screw, 16 knots. Two masts and two funnels. Ex-Alfonso XIII, ex-Oceana, ex-Scot. Broken up by Italian shipbreakers in 1927.

Vasilefs Constantinos (1914) Greek Line.

Built by Cammell, Laird & Co., Ltd., Birkenhead, England. Tonnage: 9,272. Dimensions: 470' x 58'. Twin-screw, 17 knots. Two masts and two funnels. Renamed: (a) **Megali Hellas**, (b) **Byron**. Note: She was taken over by the British government during the first World War, but was handed over to the Greek Line when hostilities had ceased. Sister ship: **Vasilissa Sophia**.

Vasilissa Sophia (1917) Greek Line.

Built by Cammell, Laird & Co., Ltd., Birkenhead, England. Tonnage: 9,100. Dimensions: 488' x 58'. Twin-screw, 17 knots. Two masts and two funnels. Renamed: **Leasowe Castle** (under management of Union-Castle Line). Note: She was torpedoed and sunk while being used as a British troopship on May 26, 1918, with the loss of 101 lives. (Never actually used as a transatlantic passenger ship.)

Vaterland (1914) Hamburg-American Line.

Built by Blohm & Voss, Hamburg. Tonnage: 51,282. Dimensions: 907' x 100'. Quadruple-screw, 24 knots. Two masts and three funnels. Note: In August, 1914, after having made her second voyage she was interned in New York. Later she was seized by the United States government and converted into a troopship. After the war she was turned over to the United States Lines and used on their service as the **Leviathan**.

* Denotes ship still in service under same name.