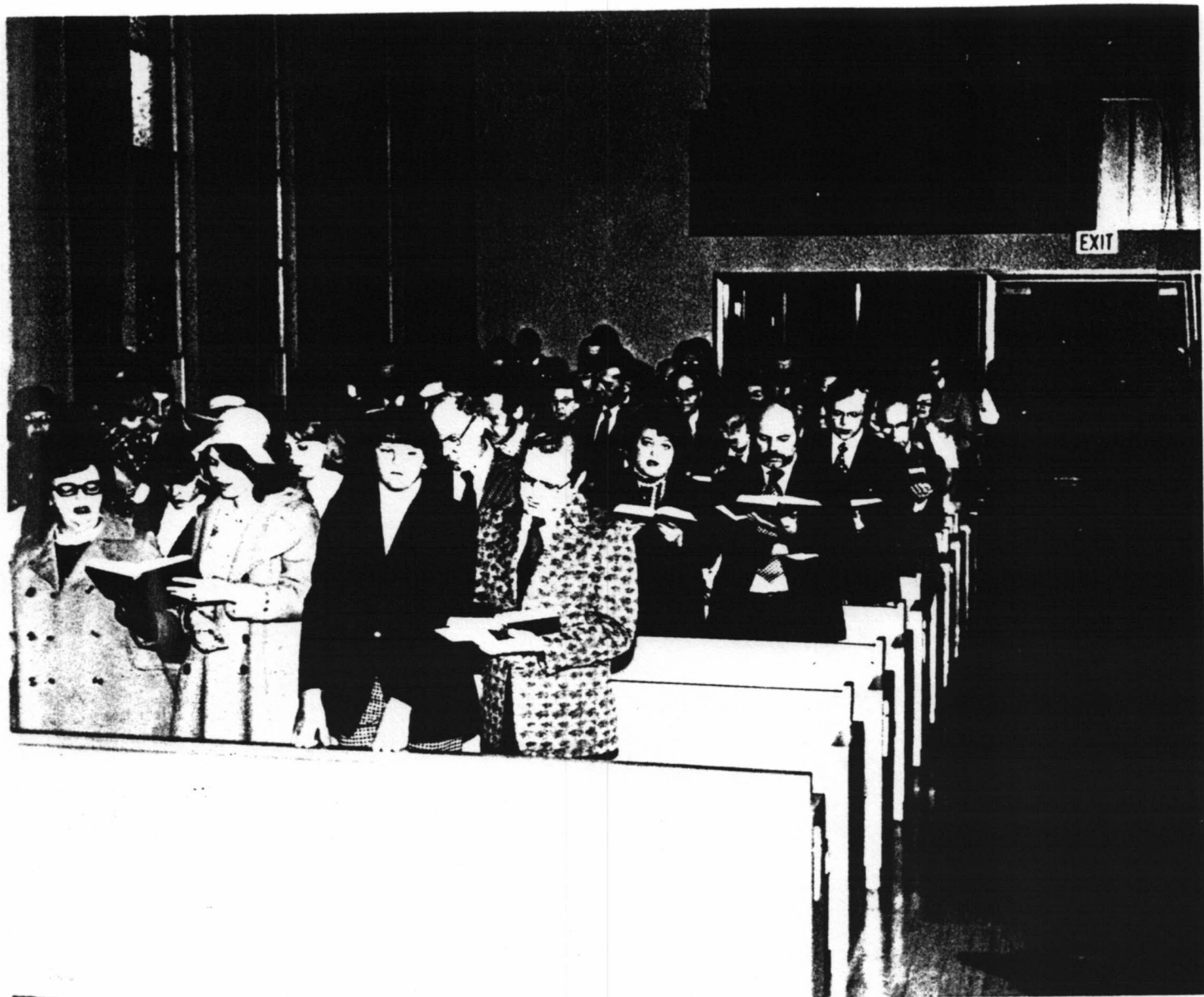


**Bygland Lutheran Church
1874 - 1974**



1974 EASTER MORNING WORSHIP



1974 EASTER MORNING WORSHIP (The Choir School is seen in the two front pews)

Dedication

*This Centennial history is gratefully and humbly
dedicated to all those who were, who are now and
who one day will be "— laborers together with God."*

(I. Cor.)



EASTER SUNDAY 1974

Foreword

"Of all the anniversaries, none can have greater significance than this for our people. If the church had not been established in our midst, and the means of grace brought to our people, other earthly material blessings would have been of very little avail. It is, therefore, fitting that we prepare for this celebration in a spirit of reverence and gratitude to God who led the early pioneers to seek first the kingdom of God when they came to this strange new country."

J. A. Aasgaard, D.D.
From an address delivered
in observance of the Centennial
of Norwegian Lutherans in America.



Dear Friends in Christ:

*A sincere welcome to all who
worship and celebrate with us.*

*Most of you are in one way or another related to someone here
or have been at some time intimately associated with this church.
For a few of you it has been your church home since childhood.
You were "grafted" into Him through the water and the Word of
Holy Baptism and you continue to receive forgiveness and day-by-day
strength through Holy Communion in a close fellowship with other
believers.*

*In this congregation live many memories which have become more
meaningful as time passes.*

*The pioneer men and women now rest from their labors, but we
rejoice in the fact that others have taken up the work they began
and have passed the torch of faith to their children as we sing —*

*"Faith of our fathers, holy faith!
We will be true to Thee til death!"*

*How pertinent are the words of David in the 145th Psalm when he
says: "One generation shall laud thy works to another, and shall
declare Thy mighty acts." Men and women have labored in His
vineyard as they shared in the work of the Bygland Congregation.*

*We thank Him in this centennial year for preserving the Church and
pray that Jesus Christ might extend His blessings upon us, as we
continue to be "Laborers Together With the Lord" and advance into
the second century. Jesus has promised:*

*"Whoever does the will of God is my brother, and
sister, and mother." Mark 3:35.*

Arne R. Carlson

Bygland Pastors — 1874-1942



BERNT HAGBOE
1873-1874



BJUG HARSTAD
1874-1876



HANS P. SOLSTAD
1876-1882



A. C. ANDERSON
1882-1889



HALVARD ROALKVAM
1889-1892



HANS SKYBERG
1892-1904



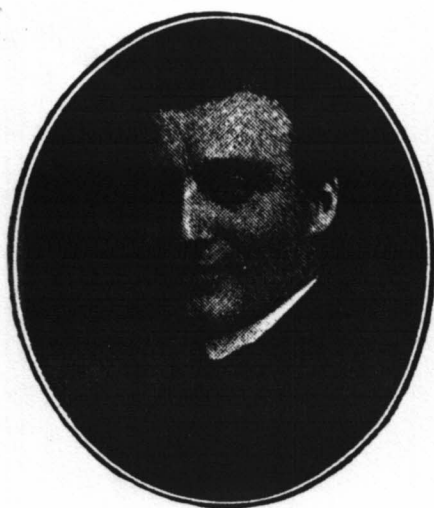
N. F. KILE
1904-1908



R. W. PETERSON
1908-1918



O. M. STENSGAARD
1920-1927



O. T. NESS
1927-1928

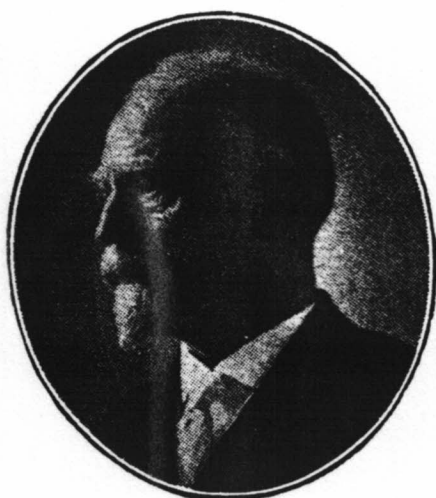


HALLVARD LIE
1928-1941



J. N. DORDAL
1941-1943

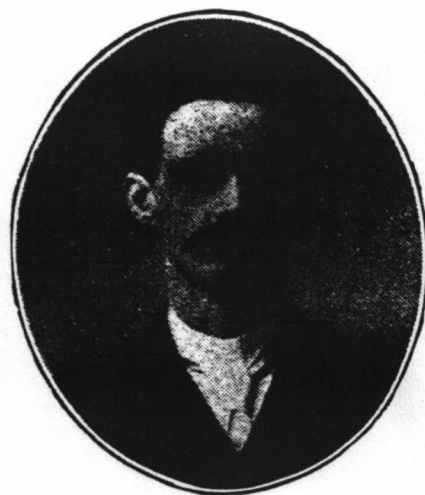
Synod Pastors — 1889-1921



O. P. VANGSNESS
1889



P. T. HILMEN
1890-1893



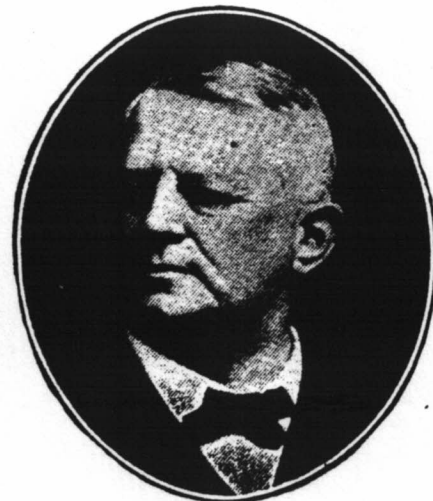
KOLBEIN HOVDE
1897-1901



S. K. THOLLEHAUG
1901-1904



L. A. HAATVEDT
1904-1912



H. B. THORGRIMSEN
1912-1920

ANDERS A. OPPEGAARD 1894-1897 (no photo available)

One hundred years ago Bygland was an unsettled area of prairie grass and virgin timber. In 1863 the United States Government had made a treaty with the Chipewewa Indians opening the land on both sides of the Red River for settlement. As early as 1871 a few hardy immigrants from Norway found their way to this territory and settled in the vicinity now called Sand Hill. In this group was a man named Tellef Ose from Setesdal, Norway. He entered into a partnership which did contracting for the Hudson Bay Company. It was on one of the trips for the company that he passed through the Bygland area and was so impressed with the rich soil and lush growth that he wrote about it to his relatives in Norway. As a result the families of Daniel and Knut Ose came in 1872 and according to the earliest records available, they were the first white settlers to establish homes. Some years later, when the township was organized, Bygland was the name chosen because these people came from Bygland parish in Norway.

The following year marked the arrival of several more settlers. Many hardships, illness and poverty were their lot when they came, but these conditions did not cause their faith in God to falter. Whenever an itinerant preacher traveled through the Red River Valley, they were eager to have the Word preached and the sacraments administered. The Rev. Bernt Hagboe was such a traveling minister and made his first visit to the Bygland settlement in 1873.

"— and we will remember the Name of the Lord our God." Psalm 20

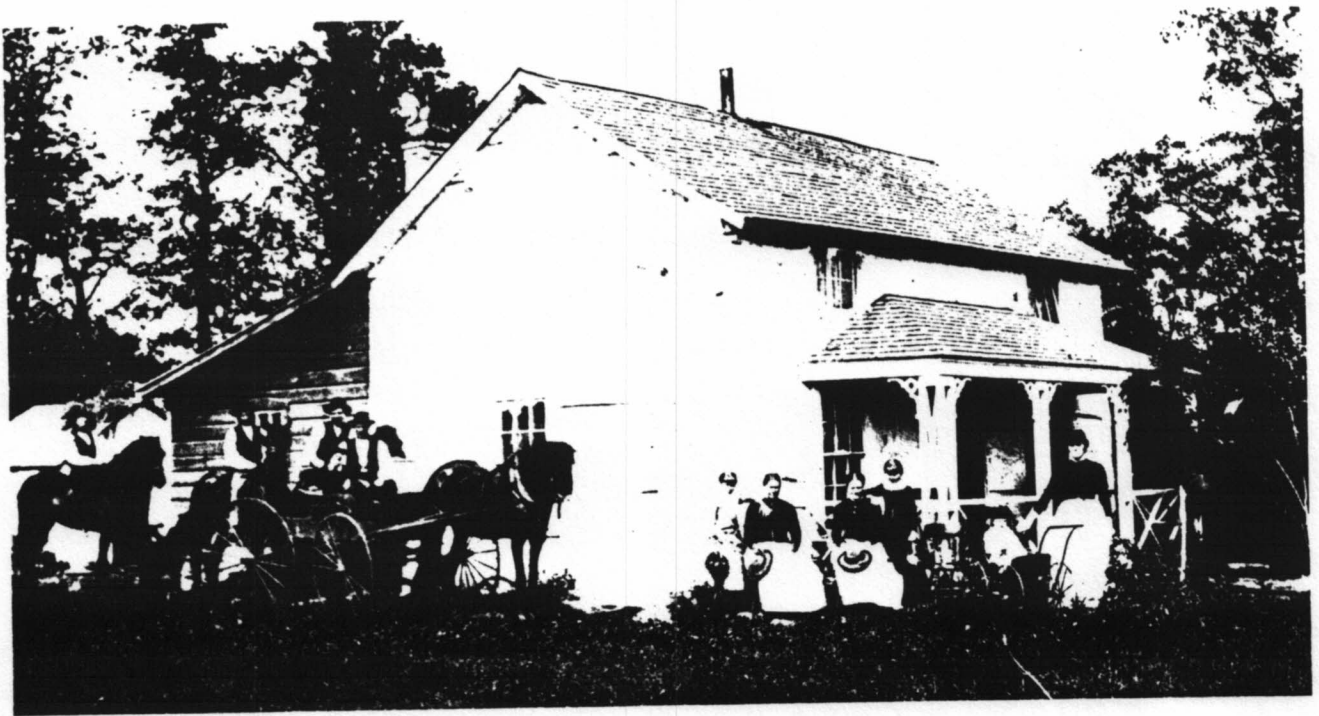
The following year, the Rev. Bjug Harstad, a Norwegian Synod pastor, visited the Ose families and left Synod literature, its doctrines and teachings. This, in addition to Harstad's friendly and outgoing manner, caused a number of the families who had come from Setesdal to feel the



ASBJORN OLSON
(A charter member)

desire and the need of a congregation of their own. A meeting was set to discuss this possibility. It was held on November 8, 1874, and at that time the Bygland Norwegian Evangelical Lutheran Congregation was organized. The Charter members were Halvor and Osmund Tharaldson, Knut Sorenson, Asbjorn Olson, and Torkel Bjornson. Pastor Harstad was asked to serve the new congregation, and at their second meeting in December the decision was made to build a church. However, this was not accomplished until 1876. The delay was due to difficulty in agreeing upon a building site and an excessively wet summer which made it impossible to haul the logs.

1876 was a happy year for the Bygland congregation for it brought them their first church built from logs hauled by Taral Anderson using a wagon pulled by oxen, and they saw their membership increase to 89. In 1876 it was decided that Bygland should be a part of a new parish along with St. Petri and Zion Congregation in Polk County and Walle Congregation just across the Red River in North Dakota. This was also the year when the Rev. Hans



A TYPICAL BYGLAND HOME IN THE 1880's

P. Solstad was called as pastor. The next year, 1877, the first Ladies Aid was organized and the first parsonage was built on the land homesteaded by the pastor.

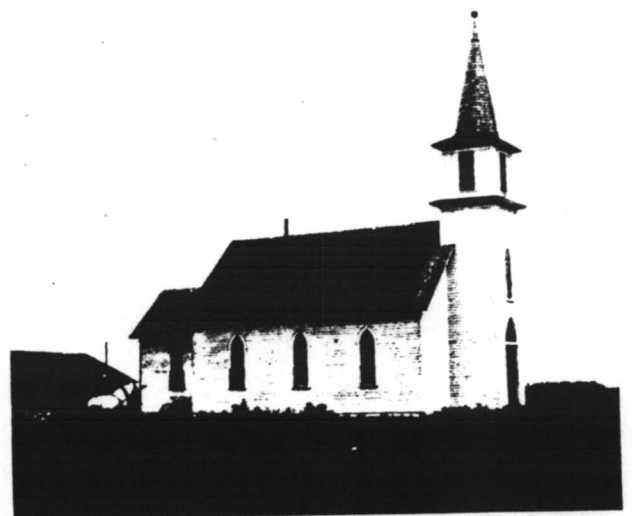
During the next five years Bygland Township had a large increase in population and church membership had grown to 237 by 1882. The Rev. A. C. Anderson came to the parish that year and resided in the parsonage located in Fisher. The church there was by this time also in the Bygland Parish, and 40 members from Bygland had transferred to Fisher congregation, no doubt as a matter of convenience.

"The glory of the Lord shall endure forever." Psalm 104

With the growth in membership, the 24 x 16 log church became very inadequate, and the congregation realized well the need of a new church. But the 1880's were difficult years. Money was scarce, interest rates were high, the price of wheat, their only cash income crop, was low, and the problems that come with progress, such as roads and schools demanded much of their time and effort. In 1879 the minister's salary was set for the first time. He was to

have \$82.50 in cash for the year, plus one bushel of wheat and one of oats from each man who raised those grains, also a load of wood from each family who had enough wood to furnish that amount.

By 1886 conditions had improved somewhat and the congregation voted to build. The new church was erected in the summer of 1887 at a total cost of \$1,450. This building still stands and has been used for many years as the Bygland Town Hall.



BYGLAND CHURCH 1887-1917



A SOCIAL GATHERING IN THE 1880's

While the congregation flourished in many ways during this period, these years also became the starting point, in time, of doctrinal differences which resulted in dissension and ultimately in division. To fully understand and appreciate what happened it must be noted that the congregation had been organized by a Missouri Synod minister, was formally joined to this Synod and called Synod ministers who had been educated in Norway or at Concordia Seminary in St. Louis. When the Norwegian Synod finally got its own seminary, professors were recruited from different places, and one of these, a gentleman named Asperheim, found himself in disagreement with Missouri Synod leaders on the doctrine of Predestination. This became the crux of the doctrinal conflict, which up to 1888 had been kept under control in Bygland Congregation. However, by May of that year, feeling on the matter reached its climax ending in a vote to divide into two congregations, namely the "United Congregation" and the "Synod Congregation." These two groups existed as such until 1921 when they became reunited.

From 1888 to 1921 the United Congregation called its pastors from the

United Lutheran Church, the first being the Rev. Halvard Roalkvam who served from 1888 to 1892. He was followed by Pastor Hans Skyberg who served for 12 years and then retired because of poor health. He resided on his farm in Bygland Township. In spite of the depression of the 1890's which struck during his ministry here, the congregation progressed in many ways — in 1896 a church bell was purchased as well as a new organ, and furnace — a new Ladies Aid was organized and a choir — two church schools, or, parochial schools, as they were called then, were in session for a number of weeks each year.

Pastor N. F. Kile succeeded Skyberg and remained here for 3 years. He was the first person to suggest a reuniting of the two Bygland Congregations.

The Rev. R. W. Peterson was called in 1908 and served until 1918. Under his energetic leadership, an active young people's society was organized and an excellent choir plus a new organ added much to the worship services.

"The Lord gave the Word." Psalm 68



A "SURPRISE" PARTY FOR A PIONEER
IN THE EARLY 1900's

629 a.m.
da han i
for 5 m

At a congregational meeting in November 1915, members went on record favoring the building of a new church. A low bid of \$8,345 was submitted for the architect's plans that had been approved, and when it appeared that enough money could be raised, the contract was let and work on the new church began. It was completed and put into use early in 1917. Again in that year, there seemed to be a general desire for the consolidation of the two Bygland churches. Consequently, at the annual meeting in 1917, it was decided to invite the Synod Congregation to discuss this possibility. A committee was named to visit the Synod group, and an agreement was thereupon reached to have joint services for one year to be held in the Bygland United Church with the Rev. H. B. Thorgrimson serving as pastor.

"O bless our God, ye people." Psalm 66

"The Lord will give grace and glory." Psalm 84

At this point it serves the accuracy of this account to note that the Synod Congregation existed for 32 years. Records show that in 1892 they built a church, attendance at services was excellent, and the original Ladies Aid continued uninterrupted during those years. The pastors who served this congregation were: O. P. Vangsness, P. T. Hilman, A. A. Oppegaard, K. Hovde, S. K. Thollehaug, L. A. Haatvedt, and finally, H. B. Thorgrimson.

The growing conviction in both the United and Synod Congregations that the entire community would realize greater spiritual growth through a unified church led to the appointment of committees from each group with instructions to

discuss consolidation. The men named from the United Church were Aanund Bestland, Herman Skyberg, and Bennie Danielson. From the Synod Church Byron Egeland, Rolf Moe and Alfred Solstad were chosen. These two committees met twice and set up the plan for consolidation which was unanimously adopted by each congregation in separate meetings on June 9, 1921. Pastor O. M. Stensgaard was called as pastor. During his time in the parish, Bygland Church made great improvements on its building by finishing the entire basement and replastering the upper part. This was in 1927, and it was that year the pastor was stricken with an illness which progressed to the point where he lay helpless and was forced to resign. The Rev. O. T. Ness from Grand Forks agreed to be the interim pastor and helped until August 1928 when Pastor Hallvard Lie was called. During his period here, the entire country suffered a severe depression. However, in spite of it, a pipe organ was installed in 1933 thanks to the efforts of the Ladies Aid and Luther League who financed this project. A new altar and baptismal font were also new additions at this time.

"Give unto the Lord the glory due his Name." Psalm 29



SYNOD CHURCH

(Built in 1892, located one mile south of present Bygland Lutheran)

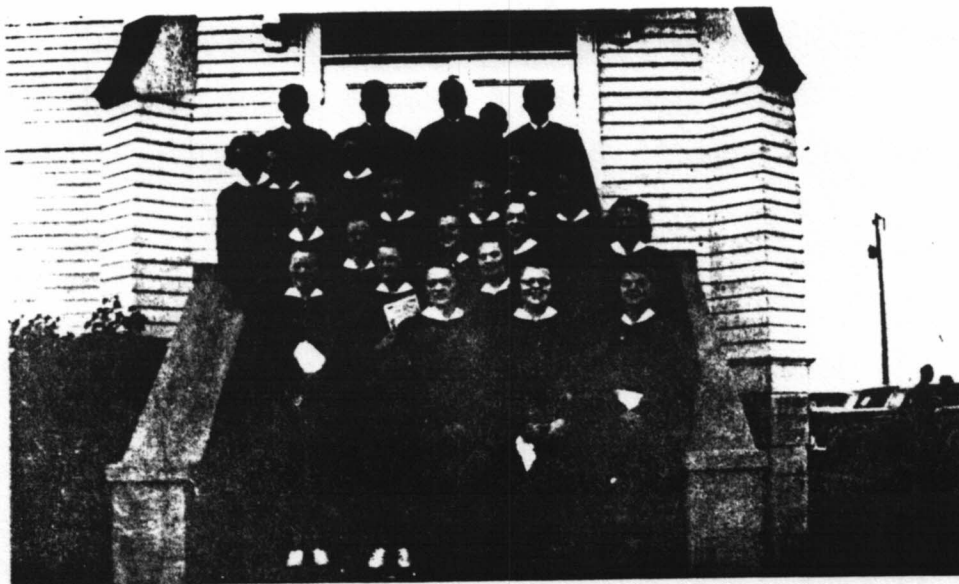
After Pastor Lie left the parish in 1941, it was served by the Reverend J. N. Dordal, who remained until Pastor Carl J. Field accepted a call in 1943. During his years of ministry here, we experienced the agony of World War II, the prosperity of the post-war years, and the beginning of a most sophisticated era of mechanized living.



YOUTH GATHERINGS (ABOUT 1910)



Under Pastor Fields sincere and dedicated leadership our congregation more fully assumed its stewardship in greater giving to the Church and its charitable causes. Although there are no figures available to verify it, it is safe to state that more was given during these years than the total for our previous



BYGLAND CHOIR

history. Among the outstanding improvements in our church property were: the addition of two acres to the grounds with extensive plantings to beautify them and to provide a windbreak, the purchase of an oil furnace to replace the coal-burning one and with this the insulation of walls and weatherstripping of windows.

"My praise shall be of Thee." Psalm 22



PAROCHIAL SCHOOL GROUPS



A CHOIR OUTING

and in 1951 the construction of a cistern. Prior to this last improvement all the water used in the church was brought by members who generally hauled it there in their cream cans. Those who had good wells provided the drinking water and the others brought what was needed for cooking and cleaning, usually heating it at home first as a matter of convenience. The barn which had always been a part of the church site scene was disposed of in 1954.



PASTOR C. J. FIELD

It is interesting to recall at this point some of the practices which were maintained or changed during these years. For instance, even as recently as 1949, three services a year were conducted in the Norwegian language. However, in 1951 the members voted to eliminate them altogether. At the annual meeting in 1948 there was a lengthy discussion on the matter of funeral memorials. Heretofore, the names of individuals, the amount of their gift and the cause to which they were given were read at each funeral. It was decided by vote that just the total amounts given to each cause should be read. At this meeting also it was voted for the first time to give a subscription to the church paper to each family in the congregation — this is still an item in our annual budget. Regular meetings of the church council began in 1954 and for a number of years three meetings were scheduled per year.

"I will sing unto the Lord as long as I live." Psalm 146

Pastor Field resigned in June 1954 and a call committee consisting of Rolf Moe, Herman Skyberg, Sr., Ole Flaatt, T. H. Solstad, and Marvin Wardner was appointed



PASTOR CLAYTON C. ENGAN

ted and authorized to call a pastor at a salary "not to exceed \$4,800 without any offerings." Pastor Virgil Foss from Grand Forks was secured as an interim pastor.

On January 16, 1955, Pastor Clayton C. Engan was installed in the Bygland-Fisher parish by Dr. A. E. Hanson, President of the Northern Minnesota District.

*"— God is the King of all the earth."
Psalm 47*

At its semi-annual meeting in May 1955, the congregation voted to become an affiliate member of the Grand Forks Home for the Aged Association (this name was later changed to Valley Memorial Home), and since then has had two delegates on its board of directors. At the annual meeting that year, it was decided that bulletins should be made up by the pastor and distributed by the ushers at each service. A corrected membership list was distributed and disclosed these facts as of February 1956:

Baptized Members 321

Confirmed Members 247

The congregation was first advised of inadequate Sunday School facilities early in 1955 and was asked to consider the possibility of building an addition to the church to house classrooms. A committee comprised of two members from the Luther League, three from the Ladies Aid, four from the Sunday School, and eight from the congregation, was appointed and charged with the duty of making a study in regard to such a building, of ways to finance such a project and then make a report to the congregation. On February 10, 1956 the committee presented an illustrated plan for a proposed Education Unit and a plan for raising money for it, to the church council. The council decided this information should be brought before the congregation, and a special meeting was scheduled for March 18, 1956 for this purpose. Considerable discussion followed the presentation as to the building itself and also the plan for financing it. A ballot

vote was cast and the proposal was approved. By September, the treasurer reported donations for the project amounting to \$10,300 in cash and \$9,000 in pledges had been received, and shortly thereafter the trustees were authorized to negotiate a loan for additional funds needed to complete the building. Construction proceeded and by January 1958, at a regular meeting of the church council planning began for the dedication of the new addition. In order to secure district president Dr. A. E. Hanson as speaker, April 20, 1958 was selected as the date for this occasion.

These were good days for the congregation, many things were accomplished and added that made the building and grounds more functional and more beautiful, and the worship service more meaningful. A new lighting system was installed as well as new altar lights, the cemetery had been greatly improved by the men of the congregation who had straightened and levelled monuments and markers, a complete plumbing system was in use, storm windows were made for the stained glass windows, new altar paraments were purchased, envelopes for

offering were a part of each Sunday worship with new offering plates, and a new hymnal and liturgical service were now also in use.

This is not to say that all the changes and innovations came easily, or without a great deal of deliberation and at times many conflicting opinions. But high principled and faithful guidance from our pastor, led us through these periods. Though often painful, we can view them now as steps in our growth and development as a mature Christian church.

"The Lord is my strength and my song." Psalm 118

Much credit must also be given to our councils who have always been tireless and diligent in discharging their duties. Life, and day to day living became much more complex in the 50's and 60's, and every year they faced new problems and responsibilities such as our pioneer fathers had never dreamed of. Insurance policies (fire, medical, liability), pension funds, building maintenance, cemetery care, office equipment, and many other items became a part of every fiscal budget. The necessity of monthly council meetings became apparent and were scheduled. With the merger in 1960 of the Evangelical Lutheran Church, the American Lutheran Church, and the United Evangelical Lutheran, they saw the need of updating our church Constitution and its articles of incorporation. At the annual congregation meeting in 1961, the revised versions of these instruments were read and adopted. An interesting item from the secretary's minutes of that meeting in regard to the election of officers is — "The nominating committee had prepared a ballot with the slate of candidates to be elected according to the new constitution." This was another "First" in procedure.

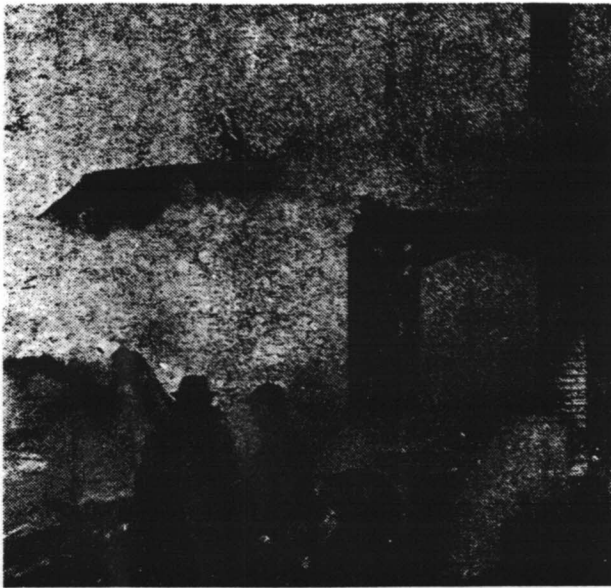


BYGLAND CHURCH
(Education Wing added 1958)

"I will call to mind the deeds of the Lord." Psalm 77

No one who recalls Monday, March 16, 1959 would deny that it was Bygland Lutheran's darkest day, for on that day our church burned down. Fire of an unknown origin was discovered about noon and soon enveloped the whole struc-

THE CHARRED RUINS



Like "the old rugged cross" the church entry and chimney stand out over the ruins of the Bygland Church as it was destroyed by fire Monday afternoon. The picture was taken just after the side wall of the church had fallen and minutes later the entry crumbled.



ture. Fortunately a brisk north wind aided fire-fighters in saving the new education annex. A great many people came to help and sympathize. Many letters of understanding and concern came from far and near, and a beautifully written editorial by H. V. Sommer appeared in the Crookston Times. We quote in part from it.

"Fire is a terrible thing when it destroys buildings designed for human habitation, commerce or education. But when it destroys a home of the spirit — a church — it seems a doubly awesome tragedy.

"The Bygland Lutheran Church burned up the other day. The church was a landmark, sitting on an expanse of prairie west of Fisher. It was conveniently located for its 300-some parishioners, mostly farm folk in the richly soiled Bygland Township area.

"The Church was a lovely, graceful edifice, appreciated by passersby of whatever religious persuasion because of its pleasant blend with the rural surroundings.

"On warm spring days, the hymn singing of the people and the pealing of the church organ were heard through the open doors. People of other faiths were touched by the beauty when they came near the church on their own errands.

"The organ is silent today. The scene Saturday, showed the remains of a basement on top of which a proud church once stood.

"The death of a church is sad, but it is, of course, only the death of its physical manifestation. This, the Bygland Church people realized immediately when the fire was over.

"It is good to see signs of renaissance at Bygland right now. It is another proof of the miracle of Eastertide."

By the latter part of April, the damages to the Education Building had been repaired, and it was possible from then on through the constructing of the new church, to have worship services in its assembly room. Sunday School was resumed, and after using the Town Hall through the spring and summer, the Ladies Aid also met there.

"Let nothing be done through strife or vain glory." Philippians 2

The decision to rebuild was no doubt taken for granted by everyone, but was formally approved by a vote of the congregation. The firm of Grosz and Anderson in Grand Forks was engaged as architects, and a Building Committee comprised of Oscar Bestland, Thorvald Moe, Herman Skyberg, Sr., Obert Legvold and Minuel Egeland, was elected. Members discussed at great length the type of con-

struction, the size and seating capacity, and the amount of money which should be spent. With this information, architects plans and sketches were drawn up and presented to a meeting of the congregation in January 1960. Mr. Grosz's estimated figure as to cost was \$116,000 (by June inflationary prices had boosted it to \$153,150 and the final figure for all contracts was \$154,638). Naturally, a great deal of discussion and many questions from members surfaced at this meeting. The Building Committee had approved the plans unanimously and recommended that the congregation accept them. A vote approved the recommendation, and a finance committee was soon elected to solicit money for the new building fund. This was to be done twice a year. The contract for construction was awarded to the Ulvedal Construction Co. of Grand Forks. Ground breaking took place June 12, 1960, the cornerstone was laid June 25,



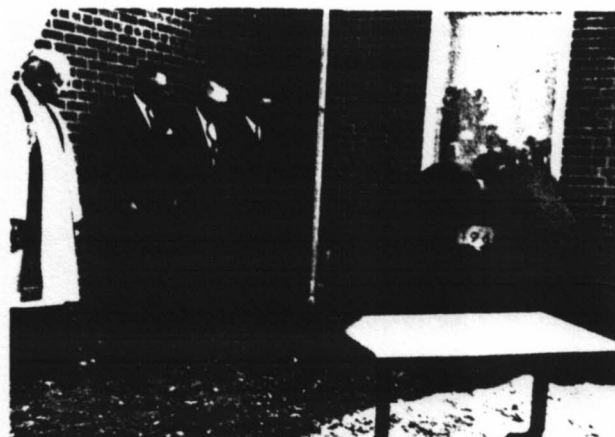
GROUNDBREAKING

1961, the first services were held July 2, and finally on July 9th the Dedication Service with Dr. O. G. Malmin, Editor of the Lutheran Standard, and Dr. A. E. Hanson, District President, as the main speakers. It was another festive day in our history — a day that filled us with gratitude to a loving, bounteous God, and to our many friends who came to share our happy day with their presence and their gifts.

Many improvements and repairs had been made on the parsonage from time to time during the years in an effort to make it more comfortable and more liveable.



THE NEW PARSONAGE



LAYING OF CORNERSTONE

But it had served since before the turn of the century, and the need of a new home for the pastor was brought before the parish councils. A Building Committee was named to work together with a similar committee from Fisher Lutheran. They were asked to investigate cost, building site and other details relative to erecting a new parsonage. Plans were soon presented to the congregation and another period of lengthy discussion was in progress. It was difficult for many members to accept the fact of additional indebtedness. However, assured that Bygland's share would not exceed \$13,000, the congregation voted to approve the proposed parsonage. It was dedicated on December 6, 1964.



THE OLD PARSONAGE

After more than twelve years of service to the Fisher-Bygland Parish, Pastor Engan resigned in July 1967 to accept a call in Mabel, Minnesota. In September the joint Call Committee sent a Letter of Call to Pastor Arne R. Carlson then serving in Park River, North Dakota. He accepted the call and was installed by District President T. C. Hanson on November 5, 1967.

Bygland Lutheran's history would be incomplete without a word about its various organizations. Mention has been made of the Young Peoples Society which was very active for many years. This group was the forerunner of the Luther League which for a time involved young folk of a wider age span than does the League of today. Our youth ages 14 through high school carry on this program now, and one of their projects each year is serving a breakfast after the Easter sunrise service.



PASTOR ARNE CARLSON



**LUTHER LEAGUERS PREPARE
EASTER BREAKFAST**



EASTER BREAKFAST SCENE - 1974

Basic training in choir singing is offered the children from kindergarten through grade seven at Choir School held once a week. Hopefully, interest in this phase of church work will in years to come result in another fine senior choir.

A program of both an inspirational and educational nature followed by a supper hour is the routine for our Family Fellowship, one Sunday evening every

other month — this provides an opportunity for the whole family to participate.

The Sunday School was organized in 1934 and during its 40 years of religious instruction to the young, has been staffed by many dedicated teachers. They have worked countless hours in an effort to do their best for our boys and girls. The Sunday School's influence for good has been tremendous.



SUNDAY SCHOOL TEACHING STAFF - 1974



**SUNDAY SCHOOL ASSEMBLES
FOR OPENING DEVOTIONS**



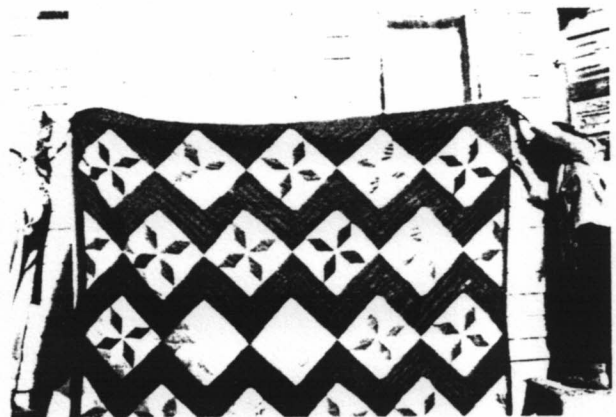
CHURCH WOMEN



**MRS. DANIEL OSE AT WHOSE HOME THE
FIRST LADIES AID WAS ORGANIZED IN 1877**

Ever since they first organized as a "Kvindeforening," through the long period as a Ladies Aid, and now as Church Women, Bygland's women have been a faithful mainstay in the congregation. During our most difficult times, they were

"Seek ye the Lord while He may be found." Isaiah 55



**QUILT MADE BY LADIES AID IN MRS. OSE'S
HOME - 1879**

able to finance needed improvements in the church and to assist in meeting our obligations to the general church budget. Mission work has always been their primary interest, but they have responded in many areas to further Kingdom work.



"THE SACRAMENTS ARE RIGHTLY ADMINISTERED"

"Blessed is the man who trusts in the Lord. He is like a tree planted by water." Jeremiah 17

So Bygland Lutheran Church has come to its 100th year. While a centennial is surely a time for joyful celebrating, it is also a time for sober thought. In spite of all the scientific and social advancements this Space Age has produced, these are times which often try the souls of men. We wonder if we can cope with it, and we often become fearful when we see the values, the traditions, and the principles we held dear threatened by the winds of change. A hundred years ago life was simple, but living was not easy. The hardy pioneers of that day were able to do so

much with so little, because they cherished their Christian faith and trusted in God. And so must we. This enduring legacy that sustained the spiritual life of our beloved church through one hundred years must be preserved for future generations.

*"O God, our help in ages past,
Our hope for years to come,
Our shelter in the stormy blast,
And our eternal home."*

Written by:
Mrs. Harold Thorson
Mrs. Arley Aslakson

Confirmation Classes

1904

Jennie Rysstad
Gertie Thorson
Eli Osmundson
Jorand Knutson
Kari Libak
Daniel Danielson
Ole Hegland
Gunsten Aakhus
Ole Halvorson

1905

Torbjor Aslakson
Gunvor Bestland
Nere Anderson
Knut Olson Storsten
Alfred Lindem
Martin Larson
Knut Erickson
Alma Skyberg
Leonora Berg
Anna Berland
Neri Knutson

1906

Torvald Leibak
Gertie Helle
Margit Lovdal
Ausilga Sorenson
Aasil Rysstad
Margit Knutson
Annie Danielson
Dora Wurden
Aslag Sorenson
Ole Trydahl
Ole Hegland
Halvor Olson

1907

Thea Ovnán
Helga Torkelson
Emma Brink
Lovise Erickson
Torbjor Ose
Ingeborg Hegland
Tone Olson
Aslag Aslagson
Ole Tharoldson
Knut Knutson

1908

Ingeborg Helle

Ingeborg Torgerson
Anna Hauge
Thone Anderson
Sofia Straume
Sherman Salvesen
Knut Sorenson
Torger Torgerson
Halvor Bestland
Ole Knutson
Palmer Ovnán

1909

Hilda Flaatt
Birgit Thorson
Sigri Hovet
Ingeborg Erickson
Signe Straume
Marie Hougén
Aasil Sorenson
Gina Torine Torgerson
Sigri Torgerson
Tomine Lee
Oscar Lindem
Edward Theodore Torgerson
Halvor Leibak
Knut Aasmundsen
Halvor Hegland
Thorvald Olsen
Halvor Nomland
Salve Knutson
John Nomland
Anker Samuel Vigers Wurden

1910

Andrew Knutson
Knut Bestland
Knut Melvin Moen
John Adolph Westrem
Ole Johan Knutson
Ole Helle
Ole Huse
Enoch Olsen
Edvard Vigen
Martin Albert Jorgenson
Gunnar Lee
Berget Anderson
Tomine Oleana Torgimson
Anne Taraldson
Torbjor Leibak

1911

Edwin Marine Herman Wurden

Herman Fritzof Skyberg
Ole Flaatt
Knut Torgerson
Gunder Torgerson
Alice Sorenson
Signe Olson Langei
Svalaug Thorson
Tora Moen
Lydia Groshong
Anna Hegland
Gertie Stallemo
Anna Salveson

1912

Karen Marie Ovnán
Gunhild Osmundson
Helene Olson
Torbjor Sorenson
Amanda Berland
Elise Aslakson
Halvor Helle
David Meren Albertinus Berland
Knut Hovet
Gilbert Knutson
George Trydahl
Knut Leibak
Martin Bestland

1913

Jens Erickson
Selma Lindem
Irene Alvilda Fredricka Wurden
Sophie Hegland
Ella Moen
Anna Johnson
Inga Vigen
Bergit Drengson

1914

Alfred Groshong
John Helle
Nils Stallemo
Berglot Olava Aslakson
Anne Lovdal
Helga Langei
Gyro Osmundson

1915

Clarence Flaatt
Gustave Haugen
Tharald Torgerson
Theodore Bestland

Ole Tharaldson
 Arne Vigen
 Knut Helle
 Tharald Moen
 Knut Johnson
 Elmer Ovnar
 Henry Knutson
 Gyro Olson
 Anna Haugen
 Amelia Torgerson
 Helma Langei
 Ingeborg Nomeland
 Betsy Hegland
 Tilla Stallemo
 Gertie Salveson

1916

Elmer Huset
 Turine Thorson
 Gunhild Haugen

1917

Agnes Torine Stallemo
 Julia Salverson
 Alma Danielson
 Turine Haugen
 Thora Tharaldson
 Sylvia Sorenson
 Alma Halvorson
 Anna Sorenson
 Elaine Hegland
 Thelma Knutson
 Anna Vigen
 Asbjorn Asbjornson
 Oscar Flaar
 Jorgen Torgerson
 Andrew Moe
 Benjamin Aakhus
 Eivind Gunderson
 Osmund Osmundson
 Salve Osmundson
 Olav Theodore Moen

1918

Tilla Asbjornson
 Alma Olson
 Carl Arthur Wardner
 Dreng Omlid
 Sven Langei
 Julius Jorgenson

1920 - Spring

Marie Egeland
 Myrtle Johnson
 Anna Nomland
 Gertrude Olson
 Ruth Peterson
 Josephine Salverson

Alma Thorson
 Andrew Bestland
 Alvin Erickson
 Halvor Halvorson
 Henry Johnson
 John Johnson
 John Moe
 Osmund Osmundson
 Vincent Peterson
 Tjostov Sorenson
 Gunder Stallemo
 John Vigen
 John Knutson
 Helen Flaar
 Inger Hegland

1920 - Fall

Gladys Knutson
 Alice Krostue
 Gerda Bestland
 Olga Sorenson
 Esther Bergstrand
 ✓Torina Hofstad
 Liv Hegland
 Bergine Egeland
 Jens Moen
 Andrew Tharaldson
 Thorvald Clifford Olson
 Sven Torgerson
 Renora Wilson
 Olga Danielson
 Charles Torgerson
 Clarence Johnson
 Inga Wilson

1921

Truman Danielson
 Norman Salverson
 Thelma Thorson
 Helen Omlid

1922

Asbjor Anderson
 Bergit Moen
 Alice Torgerson
 Guro Torgerson
 Ole Legvold
 Theodore Vigen
 Palmer Erickson
 Alfred Danielson
 Alfred Hegland
 Herman Moe
 Selman Halvorson
 Christian Osmundson

1923

John Legvold

Nels Egeland
 Jorgen Bestland
 Theodore Wilson
 Anna Osmundson
 Orva Danielson
 Clara Omlid
 Marie Sorenson
 Ingeborg Anna Johnson
 Mabel Knutson

1924

Emil Olson
 Josef Thorson
 Agnes Johnson
 Emma Anderson
 Thelma Pederson
 Alice Anderson
 Toby Westrem

1925

Josie Omlid
 Oscar Bestland
 Clayton Krostue
 Timmy Wilson
 Thor Halvorson
 Obert Legvold
 Hilda Benson
 Virgil Peterson
 Linnea Peterson
 Stanley Gunderson
 Helga Moe
 Mary Hegland
 Marie Johnson
 Bella Vigen
 Alma Haugen

1926

Marvin Wardner
 Joel Stallemo
 Alice Salverson
 Bernice Sordahl
 Beatrice Benson
 Odell Danielson
 Mina Johnson
 Ethel Westrem

1927

Gunhild Olson
 Myra Krostue
 Helgina Wilson
 Oscar Anderson
 Oliver Thorson
 Clarence Legvold
 Selma Hedstrand
 Ruth Egeland
 OSCAR JENSEN
1928
 Harold Thorson

Tellef Brokken
Tiedeman Johnson
Orvin Jenson
Meldor Sorenson
Linus Sorenson
Bernice Sorenson
Anna Legvold
Adeline Torgerson
Bergit Osmundson
Agnes Benson
Thora Hegland
Oleanna Sordahl

1930

Tellef Egeland
Gunder Marcus Krostue
Oscar Legvold
Carl Glenn Peterson
Stanley Aslakson
Elmer Johnson
Arnold Joseph Moe
George Bestland
Jens Frederick Egeland
Helga Halvorson
Tone Olson
Guro Sannes
Bergit Anderson
Gunhild Thorson
Alice Gunhild Rysstad
Selma Amelia Sorenson
Julia Alvina Jenson
Gina Wilson

1931

Thelma Marie Torgerson
Opal Evangeline Danielson
Clara Helen Moe
Bergit Rysstad
Edith Glendora Torgerson
Oscar Arthur Sordahl
Harry Thomas Rummel
Dreng Sannes
Thorvald Gilbert Moe
Elmer Jenson

1932

Orten Bernard Knutson
Alvin Palmer Torgerson
Osmund Thorson
Orville DeForest Sorenson
Raymond Olaf Egeland
Ole Olson
Bjorgulf Upstad
Hazel Genevieve Danielson
Solveig Moe
Alma Anderson

THELMA ANDERSON

Sylvia Theone Danielson
Edna Agnes Sorenson

1934

Obert Olson
Halvor Sannes
Milton Oliver Moe
Manvel Romaine Krostue
Alice Sigrid Egeland
Willia Elizabeth Henrietta Danielson
Selma Bergljot Jenson
Ruby Glendora Anenson
Selma Johnson
Thelma Rysstad
Turine Evelyn Torgerson
Tessie Clarice Austin

1935

Bergit Thorson
Mabel Anderson
Gunder Moe
Edna Torgerson
Inga Olson
Helga Sannes
Knut Upstad
Boyd Knutson

1936

Leo Henry Murray
Odney Vernon Flaatt
Jens Martin Egeland
Howard Milton Knutson
Cora Mae Danielson
Blanche Odessa Knutson
Doris Layanne Torgerson
Mary Leone Egeland
Glendora Christine Krostue
Blanche Shirley Roisland
Alida Angela Roisland

1937

Nancy Ruth Elaine Danielson
Norma Leone Lindem
Aldene Medora Vigen
Ingeborg Julia Helle
Olger Tilman Langhei
Tharald Sannes

1938

Marjorie Janet Thompson
Hazel Virginia Torgerson
Alice Norma Torgerson
Elinor Henrietta Torgerson
Hans Arne Skyberg
Tharald Chester Langei
Robert David Wurden

1939 - 1940

Norman Anderson

Helmer Rysstad
Frederick Anchor Wurden
Kenneth Loren Murray
Clayton George Langheid
Tony Gilman Langheid
Stanley Morris Jenson
Ernest Peder Egeland
Norma Genevieve Knutson
Mildred Christine Lindem
Marian Louise Knutson
Thelmyra Glendowyn Vigen
Alice Bernice Johnson
Julia Sannes

1943 - June

Ardell Truman Bestland
Leonard Raymond DeGagne
Lois Marie Egeland
Norval Harold Helle
Marian Lorraine Jenson
Kenneth Bernard Lee
Hazel Marian Moe
Osmund Bertel Moe
Bernice Joyce Olson
Carol Elizabeth Thompson
Alfred Ernest Torgerson
Ruth Orva Torgerson
Thor Sannes

1943 - Nov.

Thomas Harold Danielson
Donald Benjamin Danielson
Miner Clifford Jenson
Herman Fingar Skyberg
Arthur Clifford Grundyson

1945

John Erling Johnson
Deane Allison Skyberg
Margaret Irene Wurden
Beverlien Lee
Myrtle Tenora Torgerson

1946

Marilyn Beryl DeGagne
Gelene Evone Espetveit
Ole Lowell Flaatt
Alice Helle
Ota Delores Lee
Alfred Clarence Lindem
Mary Louise Thompson
Selma Sannes

1947

Esther Mae Egeland
Howard Ardell Halvorson
Erling Gilbert Johnson

Donald Jewell Langei
Emma Irene Salverson
Eleanor Gurine Marie Solstad

1948

Bergit Julia Johnson
Oral Jane Halvorson
Clarence Theodore Torgerson
Leonard Clayton Jenson

1949

Margaret Helen Rysstad
Vernon Roger Skyberg
Raymond Edward Torgerson
Truman Ardell Vigen

1950

Elaine Sylvia Grace Flaot
Glen Franklin Jenson
Nancy Ellen Aurora Thompson
Mary Elizabeth Wickkiser

1952

Dennis Lane Legvold
Marlan Dennis Espetveit
Sharon Marie Legvold
Barbara Margaret Aslakson
Jean Audrey Torgerson
Joan Arlene Torgerson
Lyle Daniel Bridgeford
Donald John Bridgeford
Laurel Wayne Johnson
John Theodore Bestland

1953

Antoinette LeRoi Hedstrand
Inga Bergina Johnson
Alice Jean Gwenelda Skyberg
Gilman Mylo Jorgenson
Thelmer Ardell Moe
Earl Gordon Thorson

1954

Gary John Legvold
Marlene Susan Danielson
Marilyn Adele Bridgeford
Roberta Mae Bridgeford
Helen Joyce Torgerson
Harvey Oliver Aslakson
Allan Herbert Erickson
Alice Theone Bestland

1955

Bruce Allan Bridgeford
Orville Kenneth Anderson
Sharon Gaye Cariveau
Jean Marie Danielson
Yvonne Ellen Erickson
Penelope Louise Hedstrand

Evonne Theone Jenson
Loren Bernhard Knutson
Allan Ordean Moe
Helen Elaine Moe

1957

Terrence Paul Aslakson
Raymond Allan Bestland
Helen Lucille Danielson
Richard Arnold Danielson
John Martin Egeland
Roger Manvel Krostue
Donna Marie Torgerson
Goodwin Martin Moe
Duane Richard Moe

1958

Mary Eileen Danielson
Georgia Sue Cariveau
Gary Ordean Halvorson
Donald Vincent Jenson
Eugene Allen Johnson
Judith Gail Krostue
Telford Paul Wardner
John Douglas Wickkiser

1959

Harriet Joan Bridgeford
Patricia Lou Johnson
Karen Jean Krostue
Ronald John Thorson
Constance Anderson (adult)

1960

Duane Leslie Bridgeford
Arlene Ramona Halvorson
Dennis Wayne Jenson
Richard Duane Knutson
Marsha Claire Krostue
Jarold Eugene Wardner

1961

David Jerome Danielson
Dennis Allen Halvorson
Betty Jean Hedstrand
Larry G. Krostue
John Dale Moe

1962

Ronald Wayne Bestland
Wayne Eugene Egeland
Elden Beauford Jenson
Trudy Ann Johnson
Paul Brent Thorson

1963

Glen Warren Bridgeford
Carol Fay Egeland
Alan David Knutson

Carolyn Joyce Thorson
Sandra Jean Torgerson

1964

Philip Michael Egeland
Myron Curtis Wardner

1965

Lois Thureen Halvorson
Dennis Wayne Knutson
Richard Curtis Legvold
Robert Wayne Legvold
Ardis Gail Skyberg

1966

Patrick Allen Egeland
Paul Wayne Egeland
Carol Ann Moe
Leslie Cecile Torgerson
Ronald Keith Torgerson
Valerie Ann Wurden

1967

Marilyn Kay Krostue
Dale Anton Rustebakke
Scott Royd Anchor Wurden

1968

Curtis Lee Knutson
Nancy Susan Krostue
Roger David Moe
Gayle Thorson (adult)

1969

Diane Faye Egeland
Kathy Sue Johnson
David Mark Krostue
Arnold Joseph Moe
Roberta Nan Wurden
Susan Ellen Wurden

1970

David Lowell Flaot
Randall Paul Moe

1971

Mark Alan Egeland
Janet Faye Haroldson

1972

Steven Carl Flaot
Donna Marie Gunderson
Alfred Clarence Lindem III
Steven John Rustebakke
John Osmund Thorson
Teresa Lynn Wurden

1973

Larry Kent Haroldson
Cheryl Dawn Krostue

1974

Alan Jay Halvorson

Important Dates in Bygland History

- 1872 — First white people established residence in Bygland.
- 1873 — Pastor Hagboe visited Bygland, organized the Setesdal Church.
- 1874 — Bygland Norwegian Evangelical Church organized.
- 1874 — New congregation voted to build a church.
- 1876 — First church (log) built in Bygland.
- 1877 — First Bygland Ladies Aid organized, Cemetery established and dedicated.
- 1882 — Parsonage rented in Fisher. Membership reached 200.
- 1887 — New church built.
- 1889 — Doctrinal disagreement resulted in division of congregation.
- 1892 — Norwegian Synod church built.
- 1917 — United group built church.
- 1921 — The two Bygland Congregations reunited.
- 1921 — Largest membership reached — 400 members.
- 1926 — Luther League organized.
- 1934 — Sunday School organized.
- 1958 — Education annex dedicated.
- 1959 — Church burned.
- 1960 — New church under construction.
- 1961 — Present church dedicated.
- 1964 — New parsonage built and dedicated.

Members of Bygland Congregation 1874-1974

The following list of members who have joined the congregation was determined by searching the records presently available.

1874

Halvor Tharaldson
Osmund Tharaldson
Knut Sorenson
Asbjorn Olson
Torkel Bjornson
Ole Aanundson (not a charter member)

1875

Daniel Ose, wife and three children
Johanes Halvorson and wife
Knud Knudson and wife
Halvor Torgusen and family
Soren Tjostelson, wife and two children
Kittel Myrom, wife and five children
Tjostol Sorenson, wife and seven children
Ole Bjorgufson, wife, children and wife's mother

1876

Isak Osmundson and family

1877

Ole Olson
Ole Aanundson
Knut Johanson Brokke family
Ole Johanson family
Ole Larson Bakke family
Knut Osmundson family
Salve Knudson
Ole Jorgenson family
Eyvind Jorgenson

1878

Hans Olson, wife and children
Grunde Danielson, wife and children
Ole Knudson, wife and children
Torkel Gunderson, wife and children
Gunder G. Lien, wife and children
John Johnson, wife and children
Aslak Bjornson, wife and children

1879

Ole O. Legvolden, Sr. with family
Osmund Osmundson with family
Thor G. Greibrok with family
Peter Gunderson with family
Knud Aanondson

Grunde D. Aakhus

Ole O. Vatendal

Thor Bjugson

Knud Salveson

Jens Halvorson (Egeland) family

Niels Johnson and family

1880

Hans Frederikson and family

Eyvind Aakhus family

Anthon Lindem and family

Aase Knudsdatter (widow) with family

Tellef Haaverson and family

1882

Bjorn Torkelson with family

Knud S. Langei with family

Targei Bjugson with family

Gunder Olson with family

Knud Thomason

Anund Lindem and family

Osmund Knutson and family

August Wurden and family

Hans Gudvangen with family

1883

Jacob Thomason Segberg

1884

Grunde Olson family

Halvor Sigurdson and family

1885

H. P. Solstad with family

Bertha Torkelsdatter

1886

Ole Valdeland with family

John Kristianson

1887

Olaus Martinson

Knud Ose with family

1888

John Syvesind with family

Knut O. Sobe with family

Knut Matson

Ole O. Leikvold with family

Mathias Momb with family

1889

Aslak Torkelson with family
 Torgrim Jorgenson with family
 Jorgen Torgrimson with family
 Ole Aslakson with family

1890

(United)
 Ole Torbjornson Fjosne and family
 Nels H. Egeland with family
 (Synod)
 Torjus Tellefson and family
 Ole Osufson Legvold
 Mrs. Ragnild Grundeson
 Emma Grundeson
 Sigrid Grundeson

1891

(United) Ane O. Austad
 Jorgen T. Austad
 (Synod) Torkel Bjornson and family

1892

(United) Nels Norgaard
 Ole Thompson and family
 Hover Thorson and family

1894

(United) Thor A. Berland with family
 Thor Gunderson with family
 (Synod) Knut Danielson family
 Ole Pederson family
 Gunder Gunderson
 Anders Pederson and family
 Peder Anderson
 Daniel Amundson and family
 Ole Breivold and family
 Knut Krossen and family

1895

(United) Eyvind D. Aakhus and family
 (Synod) Osmund O. Legvold and family
 Aslak K. Lien and family
 Jorgen T. Hofstad and family
 Ole Sorenson and family

1896

(United) Aanond H. Bestland and family
 (Synod) Saave Sigurdson and family

1897

(United) Arny Grundyson with family
 Abraham Newton with family

1898

(United) Peder J. Momb
 Severin Momb

Gordon Momb

Ole Momb

Tharal Langei and family
 Arne K. Flaas and family
 (Synod) Tellev Vollen
 Jens M. Egeland and family
 Jacob Hofstad and family

1899

(United) Fred Wurden
 Halvor G. Helle with family
 (Synod) Halvor Grundeson

1900

(United) Taral Trydahl with family
 Thor Vigen with family

1901

(United) Paul O. Hegland with family
 Anne D. Newton
 Osmund Rystad with family
 Gunder Nomland with family

1904

(United) Ole Torgerson with family
 Sam Sorenson with family
 Ole O. Langei with children (Gunild, Knut,
 Halvor, Tharald, Signe, Guro)

1905

(United) Martin Erickson with family
 Redor Wardner
 Knut Johnson with family
 Aslak K. Moen with family
 S. K. Flaas with family
 Salve O. Austad

1906

(United) Grunde Dahle
 Anne Dahle
 George Olson with family
 Omund Lovdal with family

1907

(United) Dreng N. Hovet family

1908

(United) Gilbert Ovnan and family
 Mrs. Salve Nilson

1909

(United) Hans Skyberg and family
 Nels Stalemoe and family

1910

(United) Osof Omundson Moi
 John Stalemoe and family
 Peder Wardner
 Torjus Johnson

1911

(Synod) Vraal Carlson

1917

(United) Bjorn Langei and family
L. H. Torgerson and family

1918

(United) Thor Roysland and family

1919

(United) Olaf Loyland family
L. O. Krostue and family

1921

Thor Legvold with family
Halvor T. Haugen with family
Gunder Gunderson with family
Edward Torgerson with family
Charles Evans
Betsy Evans
Ida Evans
Thora Evans
Thomas Egeland with family
Thomas Norby with family
Albert Torgerson with family
Ole T. Wilson with family
O. K. Osmundson with family
Tellef Sorenson with family
Tharald Vetleson with family
Andrew Westrum with family

1922

Osmund Haugen and family

1923

Einar Olson Elmholt

1925

Mathilda Olson

1929

Andrew Austin and family
Olaf P. Hedstrand and family

1934

Vincent Peterson and family

1937

Mrs. Gunder Torgerson
Elinor Henrietta Torgerson
Alfred Ernest Torgerson
Richel Howard Torgerson
Herman Johnson
Mrs. Oscar Hedstrand
Mrs. Osmund Osmundson

1938

Mrs. Alfred Berland

1940

Mr. and Mrs. B. D. Roisland
Blanche Shirley Roisland
Mrs. Truman Danielson

1943

Mrs. Mabel Moe
Mrs. Howard Knutson
Mrs. Marvin Wardner
Mrs. Alfred Solstad
Mrs. Manvel Krostue

1945

Mrs. Thorvald Moe
Mrs. Boyd Knutson
Erick William and Gladys Brink

1946

Lloyd Charron
Mrs. Hans Skyberg

1947

Percy Melvin Bridgeford

1949

Mrs. Gunder Torgerson and Donna
Mrs. Elmer Jenson
Mrs. Oscar Jenson
Mrs. Elmer Johnson

1950

Mrs. Leontine Biseniks
Harry Biseniks
Robert Biseniks
Mr. and Mrs. F. W. Wickkiser
Mary Elizabeth Wickkiser
John Douglas Wickkiser

1951

Mr. and Mrs. Duan Bjerke

1952

Mrs. Olger Langheid
Mrs. J. R. Bridgeford
Mrs. Gunder Krostue

1953

Mrs. Obert Legvold
Mrs. Frederic Wurden
Mr. and Mrs. Gunder Brekke
Mr. and Mrs. Halvor Espetveit
Gunder Skomdal
Mrs. Knut Sorenson
Mr. and Mrs. Gilman Jorgenson
Frances Walker
Mildred Walker

1954

Mr. and Mrs. Salve Sannes
Mr. Ed Jenson
Mrs. Halvor Halvorson
Mrs. Jorgen Torgerson
Mrs. Bennie Danielson
Mrs. Jorand Johnson
Mrs. Gunder Skomdal
Mrs. Robert Wurden

1955

Mrs. Lowell Flaatt

1956

Mrs. Osmund Thorson

1957

George Gunderson
Mrs. Alfred Lindem, Jr.

1958

Mrs. Osmund Moe
Nels Egeland family

1959

Alvin Feragen family
The Rev. and Mrs. Norman Johnshoy

1960

Vernon Hagen family

1961

Mrs. Howard Halvorson
David T. Beedy

1962

Mrs. Ardell Bestland
Dennis Sullivan
Orvin Jenson family

1963

Mrs. Earl Thorson
Mrs. Julia F. Town
Raymond Torgerson family

1964

Charles Bergland
Alma Haugen
Lloyd Doble family

1965

Mr. and Mrs. Sam Barney
Clarence Greene family
Mrs. John Egeland
Mr. and Mrs. Earl Lucken and family

1966

Mr. and Mrs. Gene Haraldson and family

Mr. and Mrs. Lloyd Landa
Orville Snobeck family
Mrs. Herman Skyberg, Jr.

1967

Mrs. Larry Krostue
Mrs. Duane Moe
David Mork family

1968

Mrs. Ronald Thorson

1970

Mrs. Palmer Rustebakke and Stephen
Mr. and Mrs. Ray Gibbons and Jared
Tom Vollen

1972

Norman Anderson
Mrs. Paul Egeland

1973

Gary Estad family
Mrs. Telford Wardner
Mrs. Patrick Duffy and Ann Marie
Mr. and Mrs. Merlyn Hensrud, Kimberly and Tina

The Centennial Celebration

Bygland Congregation has been mindful for some time of its approaching Centennial Year. Therefore, at its annual meeting in November 1972, a Centennial Planning Committee was elected.

At a number of meetings beginning early in 1973, ideas and suggestions for the celebration were discussed by the committee, and well before the year was over definite plans were agreed upon. Implementation of these plans has progressed since then.

The first Centennial event will be a Reunion Picnic on June 30, 1974. The worship service that Sunday will be conducted by Pastor Arne Carlson assisted by former Pastor Carl J. Field, who will bring a message in the Norwegian language. Special music by a "Reunion Choir" directed by Alfred Lindem, who was our senior choir director for many years. Former choir members are urged to participate. An afternoon program will follow a picnic dinner.

Invitations for this reunion and for the Centennial Festival Celebration set for November 10, 1974 have been sent to all former members. Hopefully, many will be able to attend both events.

Since November 8th is the actual day of the year when the congregation was organized, the committee felt that the Sunday closest to that day should be designated as our Festival Day of Celebration. Pastor Clayton C. Engan, who formerly served here, will preach at the morning worship service and plans have been made for choir music then also. After the noon meal, a program set for 2 P.M. will begin with numbers by the Concordia College Choir, and addresses will be delivered by Cecil Johnson, President of the Northern Minnesota District, and by Joseph Knutson, President of Concordia College. Burning of the mortgage will be another feature at that time. The Centennial Offering received on this Festival Day will be given to the Atonement Lutheran Church — a new ALC Mission Church in Fargo, North Dakota.

July 25th will be a special day for the Church Women. The scheduled program is titled "Kvindeforening" and will be an enactment of a typical old-fashioned Ladies Aid.

A number of our church women with a talent in painting, have done "Rosemaling" on wooden bowls for each of the dining room tables, and also on 500 wooden medallions which will be given as souvenirs of our 100th year. Commemorative silver spoons have been ordered, history books printed, and pictorial directories for all present members compiled.

"Laborers together with God," a quote from I Corinthians, is the theme chosen for our Centennial Year. It expresses our esteem for the pioneer founders of Bygland Lutheran Church, and our hope for present and future stewards of a great heritage.



THE PLANNING COMMITTEE

The Centennial Planning Committee

Lowell Flaot, Chairman
John Egeland
Oscar Bestland
Mrs. Percy Bridgeford
Mrs. Harold Thorson

Ja vi elsker dette Landet,
Som det stiger frem:
Furei, veirbidt over Vandet
Med de tusen Hjem, --
Elsker, elsker det og tænker
Paa vor Far og Mor
Og den Sogonot som sænker
Drømme paa vor Jord!

Norske Mand i Hus og Hytte,
Tak din store Gud!

Landet vilde han beskytte,
Skjunt det mørkt saa ud.
Alt hvad Fædrene har kjæmpet,
Mødrene har greddt,
Har den Herre stille lempet,
Saa vi vandt vor Ret!

Ja vi elsker dette Landet,
Som det stiger frem
Furei, veirbidt over Vandet
Med de tusen Hjem!
Og som Fædres Kamp har hævet
Det af Nød til Seir,
Ogsaa vi, naar det blir krævet,
For dets Fred slaar Leir!

Program

for

17de Maifesten 1913

Grand Forks, N. D.

Program

Ja, vi elsker dette Landet..... Nordraak
Forsamlingen

Pianosolo, Valse brillante..... Maszkowski
Miss Lillian Paulson

Norge, Norge..... Wendelborg
Bjarne

Festtale
Pastor Martin Hegland

Nationalsang. Damer i Nationaldragt.

Violinsolo, Norske Melodier.....
Prof. C. A. Lampert

Vokalsolo { a) Rose Marie..... Collan
b) Solveigs Sang..... Grieg
Miss Bessie Tharaldson

Tale om Mindegaven.....
Pastor N. J. Lohre

Jeg vil værge mit Land..... Tischendorf

Bjarne

Deklamation..... Bergliot Bjoranson
J. Burton Crary

Vokalsolo Eg elsker dei voggande Tomar Lepsoe
Jacob Hofte

Naar Fjordene blaener..... Paulsen
Bjarne

